

*The Professional's Choice.*

**PORTER-FERGUSON**

65 Hartwell Street West Boylston, MA 01583 508-835-2900 800-456-9355 fax 508-835-2944



## Multi-Puller

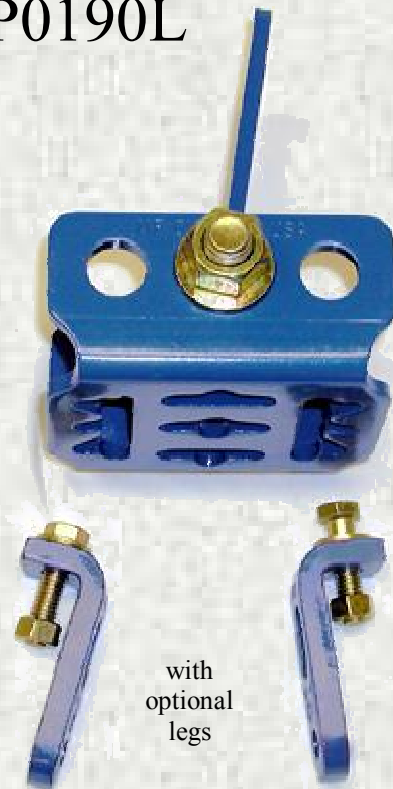
- 100% made in USA
- Lifetime Warranty\*
- Body and tongue are made of high carbon alloy steel
- Elongated mounting holes
- Multi-angle adjustment
- In-line and offset pulling

\* See warranty for details. Subject to normal usage, wear and tear.

MP1090



MP0190L



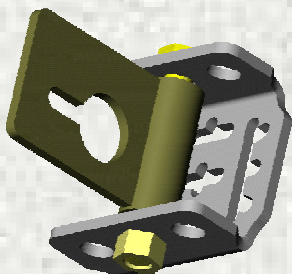
with  
optional  
legs

### SPECIFICATIONS:

**Capacity:** 3 ton (2.7t)

**Clamping face:** 4.5" x 4" overall (114 mm x 102 mm)

**Weight (w/o legs):** 4 lbs (1,8 kg)



The Multi-Puller is a versatile multiple application puller. 180 degree swiveling tongue with offset chain engagement hole and three different body mounting locations. Designed to use on frame rail pulls, frame mount pulls, shock/strut/tower/suspension pulls, pillar pulls, radiator support pulls, hatch pulls, latch pulls, hinge pulls, post pulls and anchoring/tie down.