

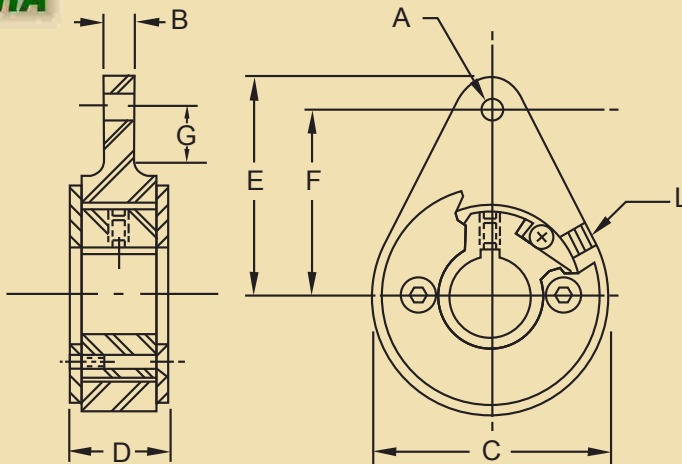
Ratchet Arm Assembly

For rotary arm actuation or backstop.

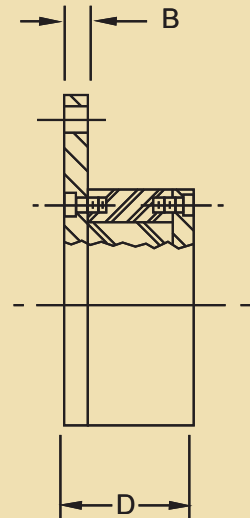
Very economical backstop for your conveyor system or use this device for rotary action in conjunction with a motor, hydraulic cylinder, pneumatic cylinder, or other mechanical means.



Type RA



Type RAB



Assem. No.	A	B	C	D	E	F	G	L	Standard Bores	Rating	
										Torque Lbs./Ft.	Speed RPM
RA14	.250	1/4	1-7/8	13/16	1-3/4	1-1/2	7/16	8-32	3/8, 1/2, 5/8	14	1800
RA100	.316	5/16	3-3/4	1-3/8	3-7/16	3	1	1/4-28	3/4, 7/8, 1, 1-1/8, 1-1/4	100	1000
RAB200	13/32	3/8	4-1/2	2-3/8	4-1/4	3-5/8	-	1/4-20	1-1/2, 1-3/4, 2	200	800
RAB500	17/32	3/8	6	2-17/32	5-1/2	4-3/4	-	5/16-18	2-1/4, 2-1/2, 2-3/4	500	600

NOTE: It is recommended on the ratchet arm ends to allow at least 1/16" free play either way on the axial plane. This allows for the cam and shaft to find their true parallelism with the ratchet housing. Tightening down and restricting the ratchet housing will cause misalignment, runout and all or some of the problems formerly listed.